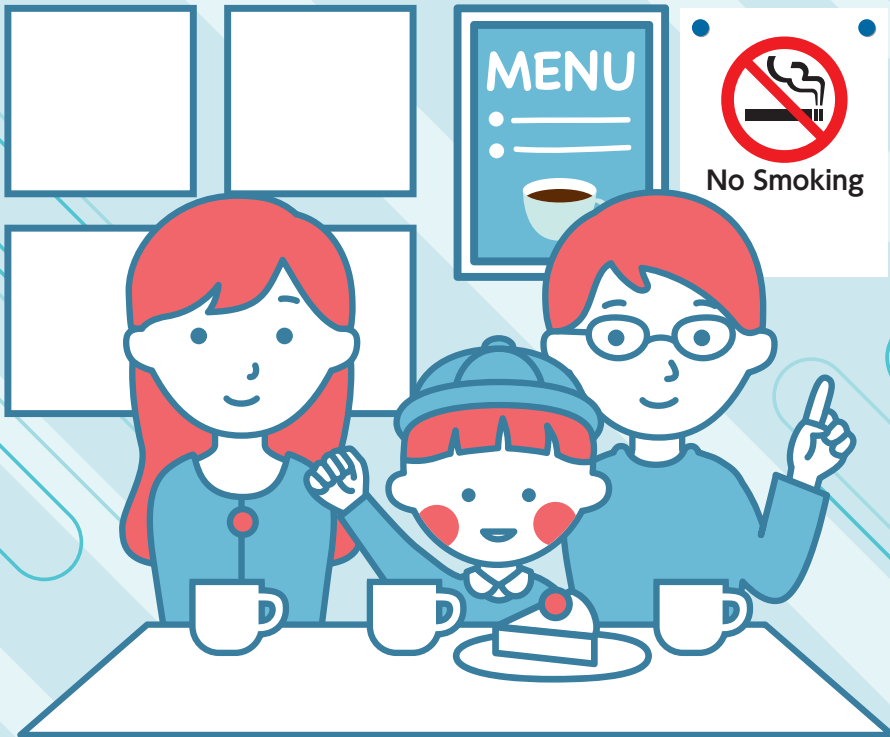


Revised Health Promotion Act and Tokyo Metropolitan Ordinance to Prevent Exposure to Second-Hand Smoke

As of April 1, 2020,
indoor smoking will be prohibited in general.



Smoking is not allowed outside designated places.

Purpose of measures to prevent second-hand smoke

In Japan, it is said that about 15,000 people are estimated to die every year from second-hand smoke, and it has been found that second-hand smoke is associated with various diseases such as lung cancer and ischemic heart disease.

For the purpose of preventing the adverse health effects of second-hand smoke by facilitating the establishment of an environment where second-hand smoke can be avoided at the intention of the individual, the State and the Tokyo Metropolitan Government are carrying out measures by establishing laws and ordinances.

Main details of regulations

◇ From April 1, 2020, in line with the full enforcement of the revised Health Promotion Act and the Tokyo Metropolitan Ordinance to Prevent Exposure to Second-Hand Smoke, indoor smoking will be prohibited in all facilities as a general rule, and smoking will only be allowed in smoking rooms that comply with criteria.

Be sure to smoke in designated places.

◇ If you smoke outside of a designated place, you may be subject to an administrative fine etc., according to laws and ordinances.

◇ Outdoor smoking rules may be independently determined by municipalities. For details please confirm with the municipalities of the location.

Even in places where you are allowed to smoke, please be considerate to prevent second-hand smoke from happening to people around you when you smoke.

Places you can smoke

Be sure to smoke in designated places.
Please note that people under the age of 20 are not allowed to enter smoking areas.



Schools, hospitals, child welfare facilities,
government office buildings, etc.

No smoking on the premises.
You can smoke in designated outdoor smoking areas.
If there are no designated outdoor smoking areas, you cannot smoke as smoking is prohibited inside the premises.

Restaurants

Smoking is allowed in the following smoking rooms.

- ① Designated smoking room... the smoking room just for smoking tobacco
- ② Designated heated tobacco smoking room...the smoking room where you can eat and drink, etc., while you smoke, limited to heated tobacco products
- ③ Smoking room...smoking seats in restaurants having no employees
In the smoking room you can do activities other than smoking such as eating and drinking.
- ④ Smoking room...bars, snack bars, etc. where smoking is the main purpose

① Designated smoking room



② Designated heated tobacco smoking room



③ Smoking room



④ Smoking room



Companies, offices, recreational facilities,
communal areas of hotels etc.

Smoking is allowed in the following smoking rooms.

- ① Designated smoking room... the smoking room just for smoking tobacco
- ② Designated heated tobacco smoking room...the smoking room where you can eat and drink, etc., while you smoke, limited to heated tobacco products

The following are not subject to regulations.

- Places where people live such as houses and verandas, tenant facilities' private rooms, etc.
- Guest rooms in hotels and Ryokans, and accommodation cabins in trains and ships

Posting of Signs

◇ Regarding the sign display of restaurant

The smoking status in the restaurant is displayed at the shopfront. In addition, signs are also displayed in the doorway of the smoking room.

◇ Regarding the sign display of other facilities

In cases where a place to smoke has been provided, signs shall be posted in the doorways of the facility and the smoking room. Notice: “No smoking” signs may not be posted for facilities other than restaurants.

Sign images



Published in February 2020

Tokyo Metropolitan Government Bureau of Social Welfare and Public Health, Health Policy Division, Health Promotion Section

Print Number (30)303

Tokyo Metropolitan Government Bureau of Social Welfare and Public Health website
<https://www.fukushihoken.metro.tokyo.lg.jp/kensui/kitsuen/leaflet/shisetsukanrihandbook.html>

