

Starting April 1, 2026,

the **BLUE TICKET SYSTEM** will apply to bicycle violations

Even **without a license**,
you're still a **DRIVER**

Follow the rules and ride your bicycle responsibly!



Guidance and enforcement after implementation of the blue ticket system (Traffic Infraction Notification Procedure)

As always, in principle, guidance and warnings will be given, and enforcement measures will be taken for malicious or dangerous violations.

Using cell phones, etc.
(holding them in your hand)



Fine:
12,000 yen

Running a red light



Fine:
6,000 yen

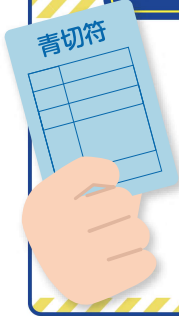


Basic policy of guidance and enforcement for bicycles



If a bicycle traffic violation is detected, **in principle, guidance and warnings will be given at the scene.** However, **malicious or dangerous violations** that may result in a traffic accident or be a hazard or nuisance to pedestrians or other vehicles **will be subject to enforcement measures.** Regarding guidance and enforcement, **the basic policy will not change after the blue ticket system is implemented.**

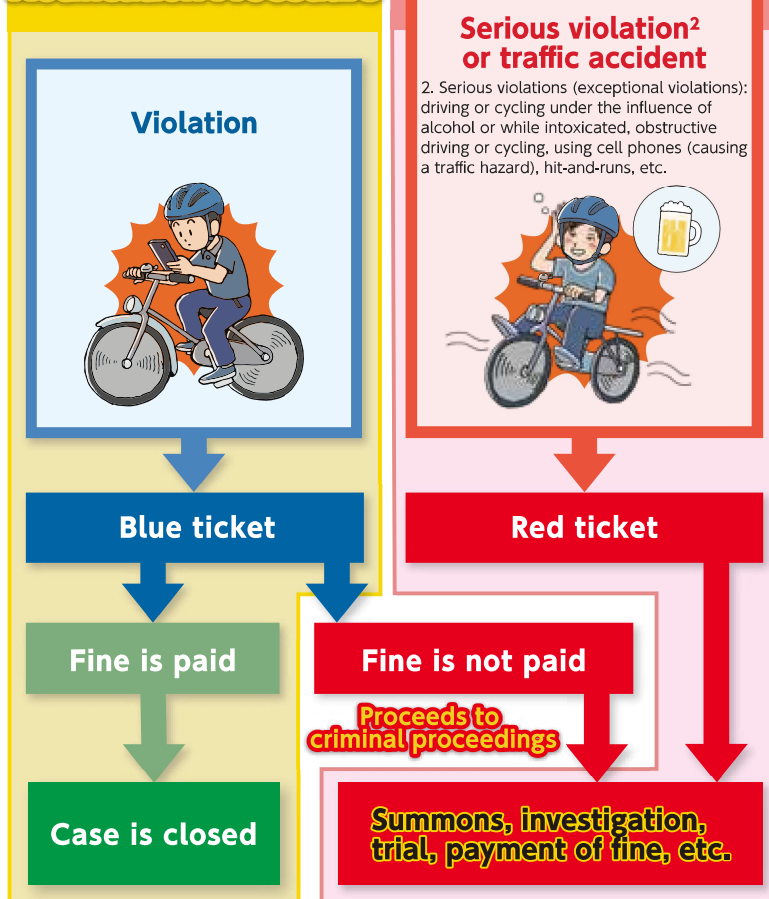
What is the Traffic Infraction Notification Procedure?



If a cyclist or driver age 16 or up who has committed a violation¹ is subject to enforcement measures, they will be issued a blue ticket (a written statement summarizing the facts of the violation) and receive a notice to pay a fixed fine. If the notified person pays the fine, the case will neither proceed to criminal proceedings nor will there be any prosecution, leaving no recorded offense.

1. Violations: violations of the Road Traffic Act that police officers actually witness and are able to determine to have been clearly committed, such as running a red light and failing to stop at designated places

Traffic Infraction Notification Procedure



Criminal proceedings

Serious violation² or traffic accident

2. Serious violations (exceptional violations): driving or cycling under the influence of alcohol or while intoxicated, obstructive driving or cycling, using cell phones (causing a traffic hazard), hit-and-runs, etc.



Examples of violations and fines

12,000 yen
● Using cell phones, etc. (holding them in your hand)
7,000 yen
● Entering a railroad crossing while the gate is closing or closed
6,000 yen
● Running a red light
● Violating safe driving or cycling obligations
● Violating traffic distribution (going the wrong way, riding on sidewalks, etc.)
● Obstructing crossing pedestrians and cyclists
5,000 yen
● Failing to stop at designated places
● Cycling without a light
● Cycling with a defective bicycle brake
3,000 yen
● Cycling side by side
● Violating restrictions on riding and loading for light road vehicles (e.g., riding with two people)

What is bicycle rider training?

If a person has repeatedly engaged in certain violations, when riding a bicycle, that may cause road traffic hazards (**dangerous conduct**), the relevant public safety commission will order the person to undergo bicycle rider training to prevent potential road traffic hazards. If the person does not follow the order to undergo the training, they will be fined up to 50,000 yen.

Dangerous conduct running a red light, failing to stop at designated places, using cell phones, violating traffic distribution, etc.